

Exciting...
Elegant...
Economical...

SUBARU ff-1





HIGH PERFORMANCE AND LUXURY

Sleek styling, luxurious interior and highest level engineering are combined in the Subaru FF-1, a compact car that meets the needs of the present age—speed and luxury. Its smooth-flowing exterior lines, FF system and long wheelbase make this FF-1 equal to the best cars in the 1500cc class in styling, roominess and stabilized, comfortable driving.

The Subaru seats five adults in comfort with plenty of leg room for all. Its engine develops 62 ps at

6,000 rpm and a maximum speed of 145 km/h (90 mph). It also boasts a fast acceleration of SS 400 meters (1/4 mile) 18.7 seconds.

Besides the 4-door Subaru FF-1, you also have a choice of the sporty two-door model or the versatile Subaru FF-1 Station Wagon. Both models mount the same high-performance engine as the 4-door sedan. Turn the following pages for a closer look at these three exciting models.



SUBARU FF-1 is equal in performance and spacious interior to 1500cc-class cars

AN OWNER'S DELIGHT!



Cutaway View

Front Engine, Front-Wheel-Drive (FF) System
The Subaru FF-1 series of cars have adopted the FF system in which the engine, transmission and differential are all compactly grouped under the front hood. With the FF system you can cut sharp corners more smoothly at high speeds with greater roadholding qualities because of the front-wheel drive, and the car floor is made flat for a more spacious interior because there's no need for an under-the-floor propeller shaft. The elimination of the propeller shaft also

made possible the long wheelbase, equal to 1500cc cars, which reduces pitching for more comfortable riding, and the spacious rear trunk, largest in this class.
Center Pivot Steering System The Subaru FF-1 incorporates the revolutionary in-board type front brake drums which are placed close to the differential instead of inside the front wheels. This makes possible the center pivot steering system in which the king pin axis is identical with the center line of the tire. This system has

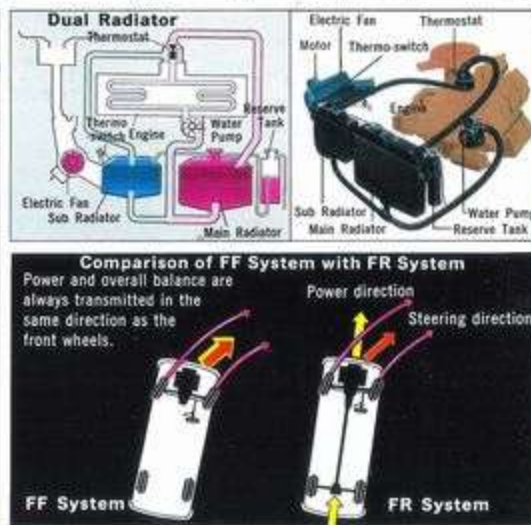


Center Pivot Steering System



Constant Velocity Joint
Brake Drum
Double Offset Joint

the following advantages: (1) Feather-light steering even at very low speeds. (2) Road surface shocks are absorbed and not transmitted to the steering wheel. (3) Turning circle is very small in spite of a long wheelbase. (4) Unsprung weight is reduced for greater roadholding of the tires, and increased comfort and stabilized riding.
Dual Radiator System This is another unique feature of the Subaru FF-1. Since this system requires no radiator fan there's no fan rotating noise. That's why it's so



Dual Radiator
Thermostat
Electric Fan
Sub Radiator
Main Radiator
Water Pump
Reserve Tank

Comparison of FF System with FR System
Power and overall balance are always transmitted in the same direction as the front wheels.
Power direction
Steering direction
FF System
FR System

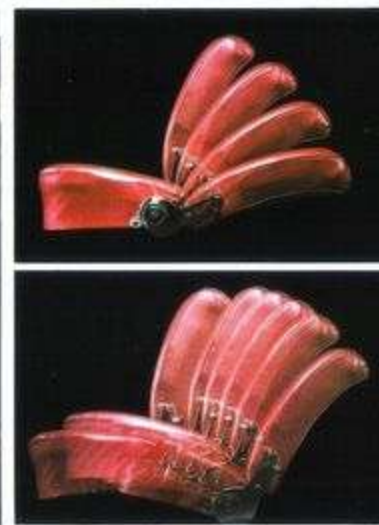
quiet inside the car. When you start the engine, only the sub-radiator is activated. This prevents loss of efficiency through overcooling. At normal cruising speed, when the temperature reaches 82°C (179.6°F) a thermostat automatically brings the main radiator into action. Unlike engines employing the ordinary radiator fan, this system eliminates power loss. When the engine heats up to 92°C (197.6°F) when going up steep hills or moving along at a snail's pace, the thermostat automatically



activates a small generator fan that quickly cools the sub-radiator. Thus, the engine is always kept at a suitable temperature by the dual radiators and overheating worries are completely eliminated.
Superb Roadholding Power and overall balance are always transmitted exactly in the same direction as the front wheels, traction is improved, and the dangers of sideslipping or skidding are drastically reduced. You'll really appreciate the superiority of the Subaru front-wheel-drive system on rough,



gravel, muddy or snowy roads.
Rationally Designed Driver's Seat The separated front seats slide a total of 120mm (4-3/4 inches) forwards or backwards in five stages to suit the physical requirements of the driver or passenger for the most comfortable fatigue-free driving or riding comfort. The soft-cushioned seats and independent suspensions on all four wheels add to your riding comfort. The Subaru FF-1 sedan has an added refinement—the front seats are of the reclining type which are



adjustable in four stages. These four positions can be further adjusted to give you the exact reclining angle you want.
Largest Trunk Space in this Class The spare tire and jack are not kept in the trunk room. They're put away under the hood in front. This means not only more luggage space but also no more exasperation in having to remove luggage when changing tires. Another reason why the trunk is



essential to get in the way. It's up front in the engine room. And the gasoline tank is under the rear seat. That's why the trunk floor can be lowered way down for more space. This trunk will hold six full-set golf bags and several travelling bags. To give you a different idea—you can pack 48 soccer balls in this trunk. That's 11 to 18 more than can be said for an ordinary 1500cc-class car.





41

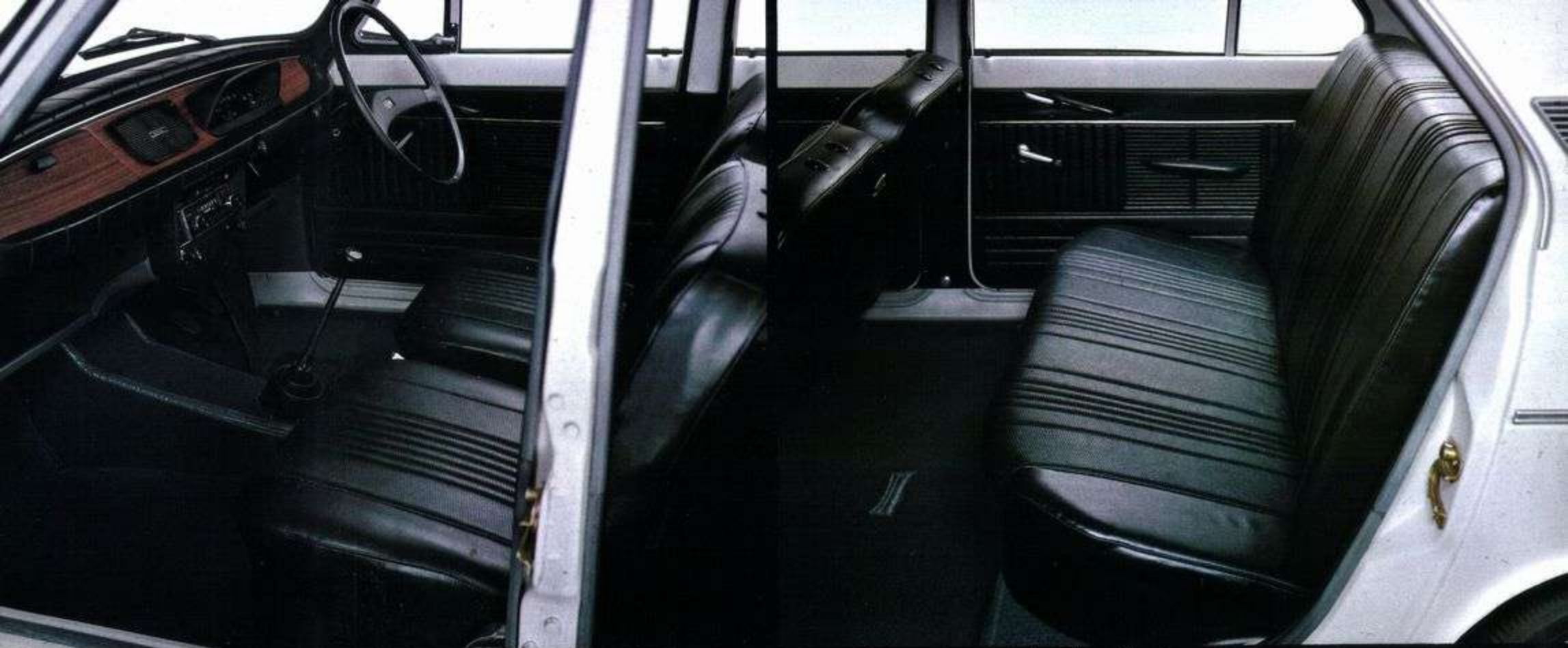


21



**ELEGANT DASHBOARD
EASY-TO-READ
INSTRUMENT PANEL**

The elegant, dark-toned, leather-grain dashboard complements the luxurious interior appearance. The meters and gauges are grouped for maximum convenience and accurate, at-a-glance readings in the non-glare instrument panel. All controls, switches and pedals are located for maximum control efficiency. These, together with the wide panoramic windshield and two-speed windshield wipers are the answer to safer driving. The floor-mounted shift-lever is situated so that the right arm falls down naturally from the steering wheel onto the shift lever knob. There will never be any groping. And the knob is engraved with the gear shift pattern.



LUXURIOUS
AND ROOMY INTERIOR
FOUR-DOOR SEDAN

41

Appropriate to its sleek exterior styling, the interior of the four-door sedan is elegant and serene. The 10-20% more window area, as compared with the average 5-passenger car, brightens up the de luxe upholstery. Because of its long wheelbase, there's no tire housing protrusion on the rear seat. Combined with the flat floor, this provides real comfort for five adults. The interior is ever so quiet because the dual radiator system uses no radiator fan and the engine is quiet and vibrationless.



**SPORTY AND
READY-FOR-ACTION
TWO-DOOR SEDAN**

21

The wide, wide doors, with a width of 1,053mm (41-1/2 inches), permit easy access into and out of the rear seat. The floor is flat, allowing plenty of leg room. The interior is as spacious as the 4-door model and accommodates five adults comfortably. The FF system gives this model and the four-door model more cubic feet of interior space than a 1500cc-class passenger car. Children ride with added protection in back seat of this two-door model which is as comfortable as your own living room.



VERSATILE BIG LOAD SPACE STATION WAGON

This sharp-looking Subaru FF-1 Station Wagon packs a lot of practicality along with its attractive styling and de luxe

interior. It's easy to load heavy luggage—the floor is only 39cm (15-3/8 inches) from the ground. As in other FF models, you get an extra bonus in inside space. Only the Subaru FF-1 Station Wagon offers luggage space equal to 1500cc models. This extra-large luggage room is possible because the FF system, which eliminates the propeller shaft, affords an unusually practical, flat, wide luggage space.

You experience passenger-car comfort when driving the Subaru FF-1 Station Wagon. There is personalized tastefulness in the styling and appointments. With or without a load, you get that wonderful sense of road-hugging balance

and light steering. The engine is quiet, vibrationless, and the dual radiator system is designed so that it never overheats. There's added safety in greater visibility with the large window areas, three-point safety belt anchorages, powerful brakes both front and rear, far-reaching headlights, and high visibility taillights.

The Subaru FF-1 Station Wagon is a versatile combination of passenger-car comfort and commercial vehicle convenience unmatched anywhere. Your comfortable ride is further enhanced with the knowledge you are driving a vehicle of high performance and mechanical stability.

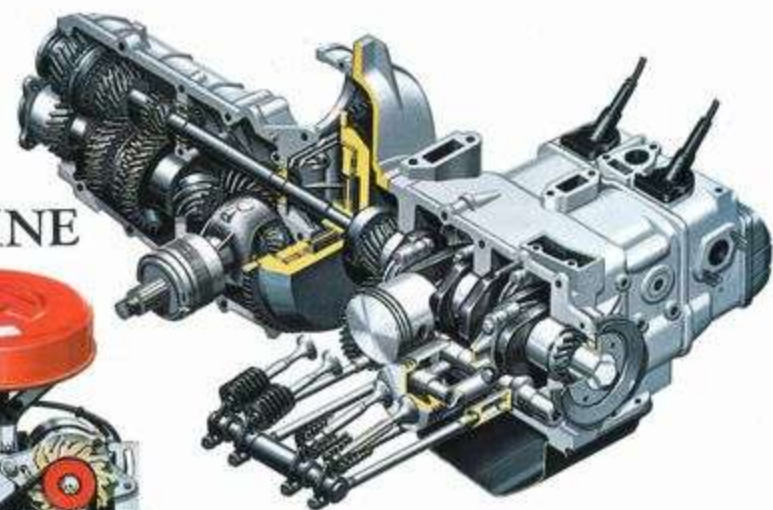


POWER TO SPARE!

LIGHT, COMPACT, EFFICIENT, HIGH OUTPUT ENGINE



1100cc 62ps



This high-performance engine mounted on the Subaru FF-1 Four-Door Sedan, Two-Door Sedan and Station Wagon develops well-balanced operation at any speed, perfectly matched to today's driving requirements. It's a four-cylinder,

water-cooled, 4-stroke horizontally opposed engine—the design that's most efficient for the front-engine, front-wheel-drive system.

It incorporates a newly designed high efficiency combustion chamber, with consideration for anti-knock qualities, for greater efficiency throughout the entire speed range. The use of aluminum alloy lightens the engine weight, and the engine, transmission and differential are compactly assembled. This construction is ideal for the FF system.

High durability and reliability of the engine are ensured through the specially strengthened crankshaft and decrease in the weight of the valve mechanism system through the adoption of the aluminum push rod.

The car interior is very quiet because the well-balanced, horizontally opposed engine and the dual radiator system with no radiator fan are virtually void of noise and vibration.

With the easy-to-cool aluminum alloy engine and the advanced combustion chamber design, you'll enjoy efficient money-saving driving because the engine will run perfectly on regular gasoline.

SUBARU FF-1 SEDAN & STATION WAGON SPECIFICATIONS

ITEMS	MODELS			ITEMS	MODELS		
	4-Door Sedan	2-Door Sedan	Station Wagon		4-Door Sedan	2-Door Sedan	Station Wagon
Dimensions & Weights				Transmission			
Overall Length	3,930mm	3,930mm	3,880mm	No. of Speeds	4-speed forward, 1-reverse	4-speed forward, 1-reverse	4-speed forward, 1-reverse
Overall Width	1,480mm	1,480mm	1,480mm	Transmission Type	Synchronised on all 4 forward speeds, selective sliding on reverse		
Overall Height	1,390mm	1,390mm	1,415mm	Gear Ratios	1st: 3.540	1st: 3.540	1st: 4.000
Wheel Base	2,420mm	2,420mm	2,420mm		2nd: 2.235	2nd: 2.235	2nd: 2.438
Tread Front	1,225mm	1,225mm	1,225mm		3rd: 1.542	3rd: 1.542	3rd: 1.542
Tread Rear	1,210mm	1,210mm	1,235mm		4th: 1.033	4th: 1.033	4th: 1.033
Ground Clearance	180mm	180mm	180mm	Reduction Gear	Hypoid Gear 4.125	Hypoid Gear 4.125	Hypoid Gear 4.125
Cargo Deck Ground Height			390mm	Final Reduction Gear Ratio			
Vehicle Weight	695kg	690kg	745kg	Steering System			
Seating Capacity	5 adults	5 adults	2 or 5 adults	Type	Rack & Pinion	Rack & Pinion	Rack & Pinion
Total Vehicle Weight			1,255kg	Suspensions			
Maximum Loading Capacity			400kg	Front Axle	Wishbone Type Independent Suspension		
				Rear Axle	Trailing Arm Type Independent Suspension		
				Front Spring	Torsion Bar		
				Rear Spring	Torsion Bar with Coil Spring		
Performance				Tires			
Maximum Speed	145km/h 90mph	145km/h 90mph	145km/h 90mph	Size & Type	6.15-13-4p (Low Profile Type)	6.15-13-4p (Low Profile Type)	6.15-13-6p (Low Profile Type)
Climbing Ability Sin θ	0.397	0.401	0.350	Brake System			
Turning Circle	9.6m 31.5ft	9.6m 31.5ft	9.6m 31.5ft	Front Brake	Duo-Servo Leading & Trailing	Duo-Servo Leading & Trailing	Duo-Servo Leading & Trailing
Braking Distance	13.5m 44.3ft	13.5m 44.3ft	13.0m 42.7ft	Rear Brake			
	at 50km/h 31mph	at 50km/h 31mph	at 50km/h 31mph	Body			
				Type	Monocoque Type	Monocoque Type	Monocoque Type
Engine				Heater			
Model	EA-61	EA-61	EA-61	Room Heater	Standard Equipment	Standard Equipment	Standard Equipment
Type	2 Pairs Horizontally Opposed, Water-cooled, 4-Stroke Engine			INTERIOR COLOURS			
Bore x Stroke	76mm x 60mm 2.99in x 2.36in	76mm x 60mm 2.99in x 2.36in	76mm x 60mm 2.99in x 2.36in	Four-Door Sedan	Black		
Piston Displacement	1,088cc 66.4cu/in	1,088cc 66.4cu/in	1,088cc 66.4cu/in	Two-Door Sedan			
Compression Ratio	9.0:1	9.0:1	9.0:1	Station Wagon			
Maximum Output	62ps/6,000rpm	62ps/6,000rpm	62ps/6,000rpm				
Maximum Torque	8.7kg-m/3,200rpm 62.9ft-lbs/3,200rpm	8.7kg-m/3,200rpm 62.9ft-lbs/3,200rpm	8.7kg-m/3,200rpm 62.9ft-lbs/3,200rpm				
Fuel Tank Capacity	36l (9.5 US gal, 7.9 Imp gal)	36l (9.5 US gal, 7.9 Imp gal)	36l (9.5 US gal, 7.9 Imp gal)				
Electrical Equipment							
Battery	12V-32AH	12V-32AH	12V-32AH				
Generator	12V-360W	12V-360W	12V-360W				
Starter	12V-600W (0.82ps)	12V-600W (0.82ps)	12V-600W (0.82ps)				
Clutch							
Type	Dry Single Plate Diaphragm Type	Dry Single Plate Diaphragm Type	Dry Single Plate Diaphragm Type				

Fuji Heavy Industries Ltd. reserve the right to change specifications and equipment at anytime without notice.

Subaru FF-1 4-door Dimensions



Subaru FF-1 2-door Dimensions



Subaru FF-1 Station Wagon Dimensions

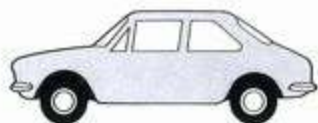


Body and Interior Colours

Five body colours of Tropical Red, Dene White, Astra White, Volcanic Gray and Marina Blue and one interior colour of Black are available for the Subaru FF-1 Four-Door and Two-Door Sedans. The body and interior colours for the Subaru FF-1 Station Wagon are Dene White, Autumn Red and Black respectively.



Tropical Red



Dene White (For right-hand drive only)



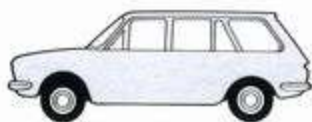
Astra White (For left-hand drive only)



Volcanic Gray



Marina Blue



Dene White



Autumn Red

 **FUJI HEAVY INDUSTRIES LTD.**

